

Step 3:

(1) On the next screen, you will find the “**Client ID**” and “**Secret key**” for your app. Copy this key pair and paste it into **Social Login** module. Remember to turn off the “**Use sandbox mode**” switch after your app goes live successfully.

[← Back](#)

Sample social login app

Note that not all features are available for live transactions. Features available for live transactions are listed in your [account eligibility](#).

API credentials

App name Sample social login app

Client ID AemuHjtigqk9ZXTGzMJW8R47VUMYLSh4g-pTy422
h_CSksru2E0MEENLDRGArt-hNnqmdQ0rq0vcpkS-

Secret key 1

[+ Add Second Key](#)

Live PayPal account

[Business Account Settings](#)

Primary Email

Features

Accept payments

- Vault**
Save your customer's payment methods to speed up checkout.
- Native Checkout SDK**
Allow customers to check out without leaving your Mobile app. Available through the [Native Checkout SDK](#)
- Subscriptions**
Set up recurring payments for customers.
- Invoicing**
Send and manage customer invoices.
- PayPal Here**
Process card transactions in person.

[Save Changes](#)

Other features

- Payouts**
Send payments to multiple PayPal accounts at once.
- Customer disputes**
View, provide evidence, and appeal disputes.
- Log in with PayPal**
Let customers log in with their PayPal logins.
- Transaction search**
View your PayPal transaction history.

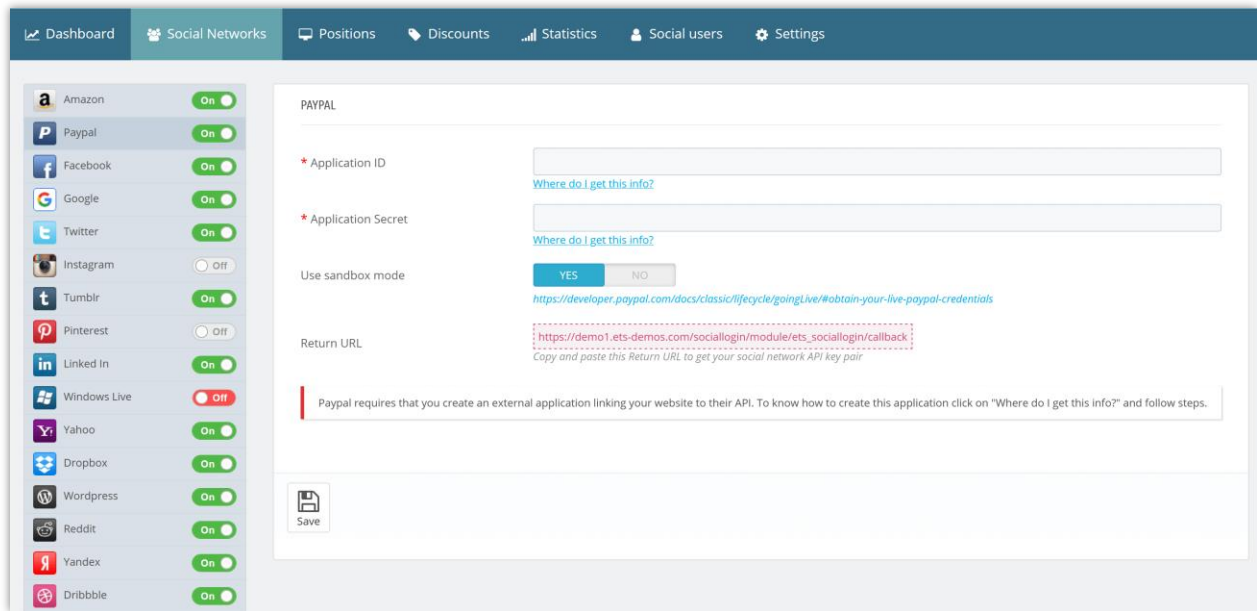
Live Webhooks

Configure webhooks to notify your app when certain events occur. To configure a webhook, define your webhook listener URL and a list of events for which to listen. You can configure up to ten webhooks. Each webhook can subscribe to either specific events or all events. To learn more about webhooks, see [webhooks notifications](#).

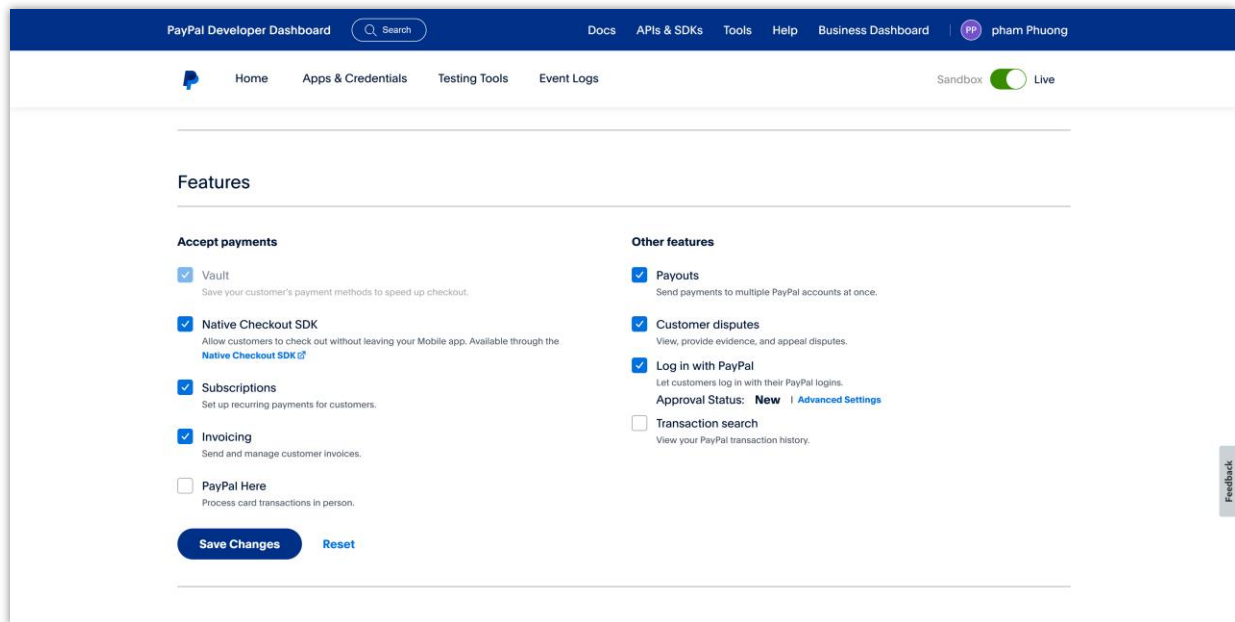
Webhook	Webhook ID	Events Tracked	
---------	------------	----------------	--

You do not have any events for the selected application

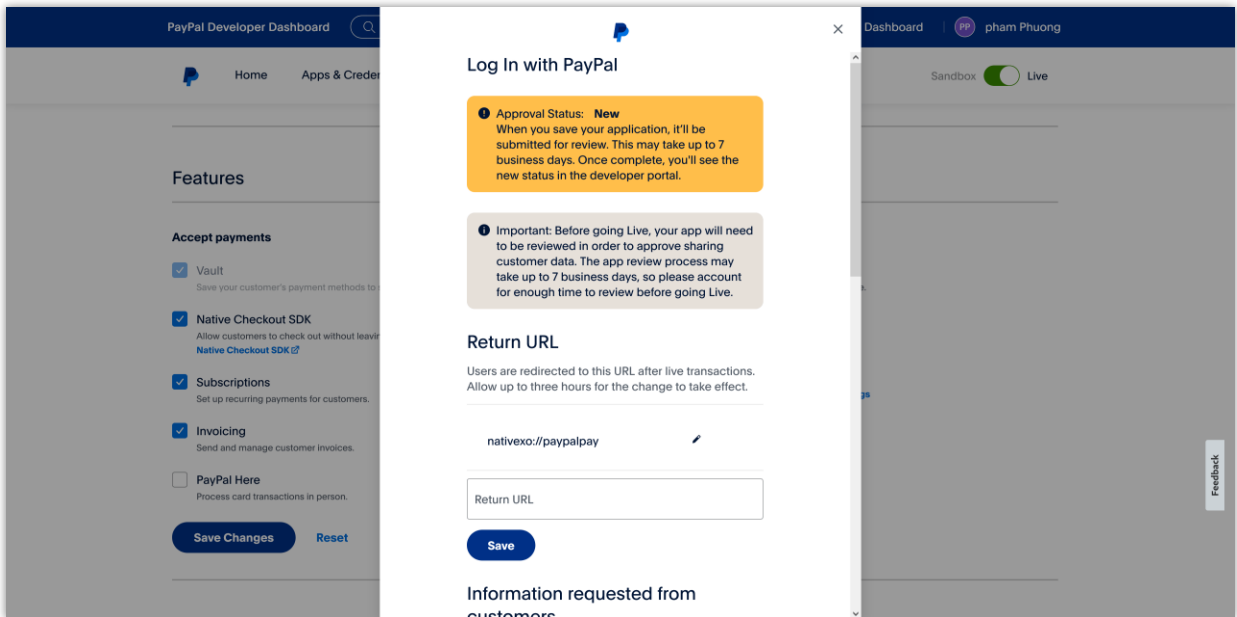
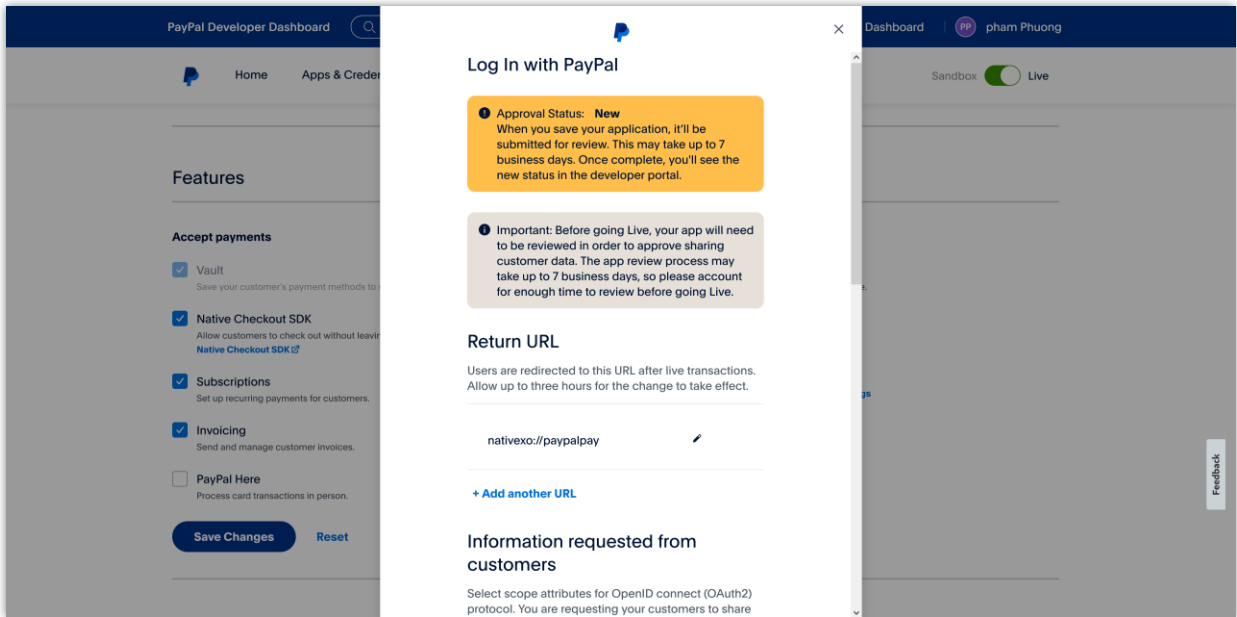
[Add Webhook](#)

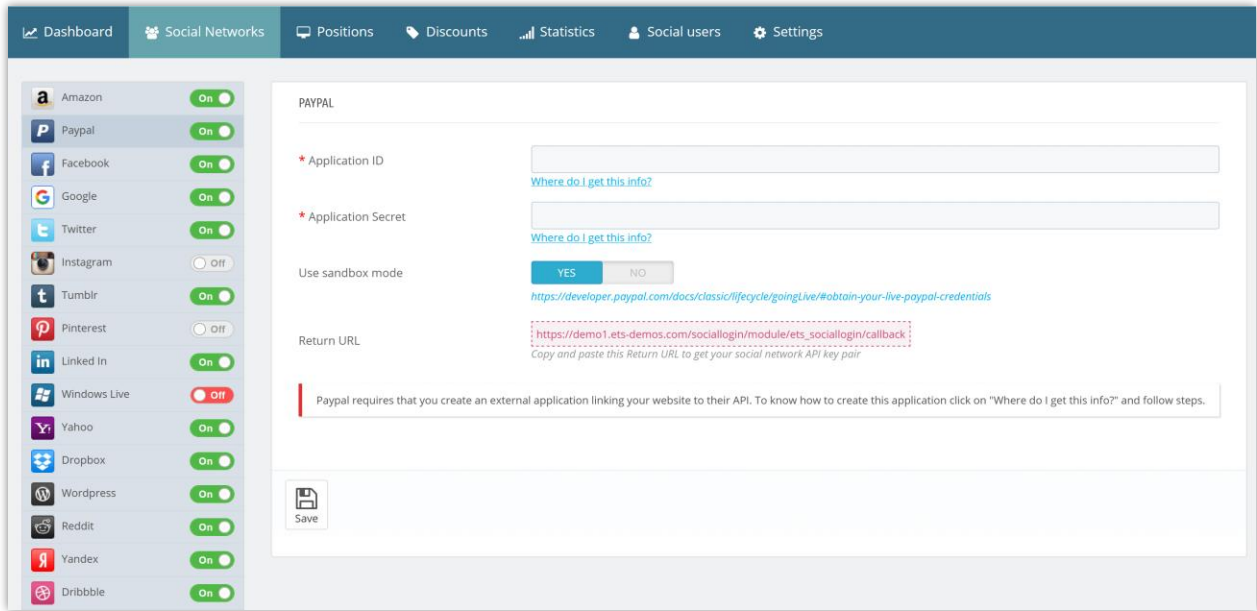


(2) Scroll down to “**Features**” section > Select “**Log in with PayPal**” feature > Click on “**Advanced Settings**” link.

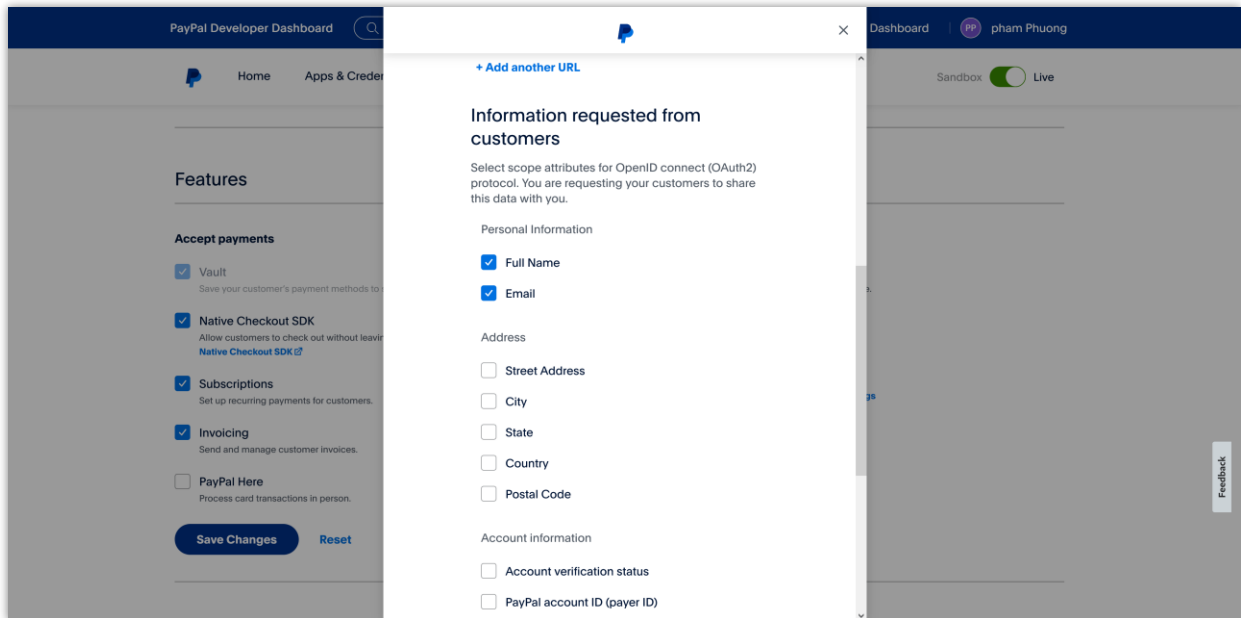


(3) Click on “**Add another URL**” > enter the “**Return URL**” provided by **Social Login** module. Click on “**Save**” button.

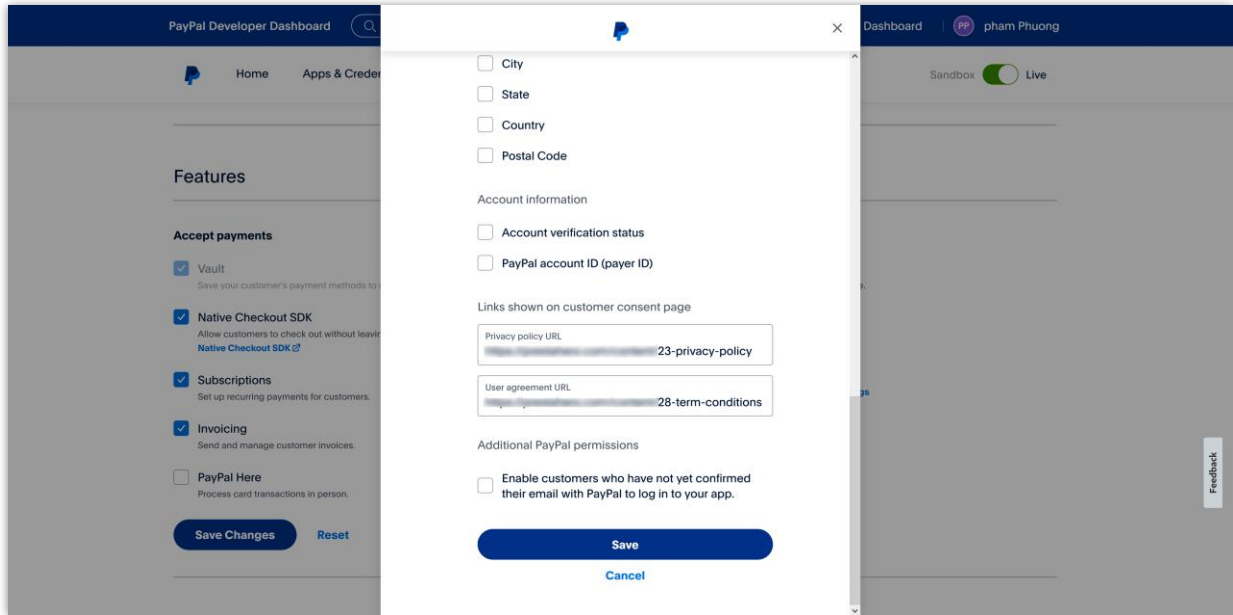




(4) Scroll down and select the information you want to collect from your customers.



(5) Enter the **Privacy policy URL** and **User agreement URL** into respective fields. Click on **“Save”** button to finish.



NOTE:

- *Ensure your PayPal Business account is verified before you go live.*
- *Your app may need 5 – 7 days to get approved by PayPal staff. Please be patient.*